

# PAD



**COMUNE DI AMALFI**  
SETTORE  
LAVORI PUBBLICI  
A DEMANIO

## PIANO ATTUATIVO DI UTILIZZAZIONE DELLE AREE DEL DEMANIO MARITTIMO

Tav.

AMALFI

SCALA

DICEMBRE 2024

# Allegato F - E1.2

## Raccolta Tavole C

IL SINDACO: Daniele Milano  
IL R.U.P.: Ing. Pietro Fico  
PROGETTAZIONE:



**S.I.M.A. Società d'Ingegneria s.r.l.**  
Sede legale: via C. Colombo, 18/A - 80061 Massa Lubrense (NA)  
Tel./Fax: 081 8789052  
mailto: [simaingegneria@pec.it](mailto:simaingegneria@pec.it)  
Partita IVA: 03808821213



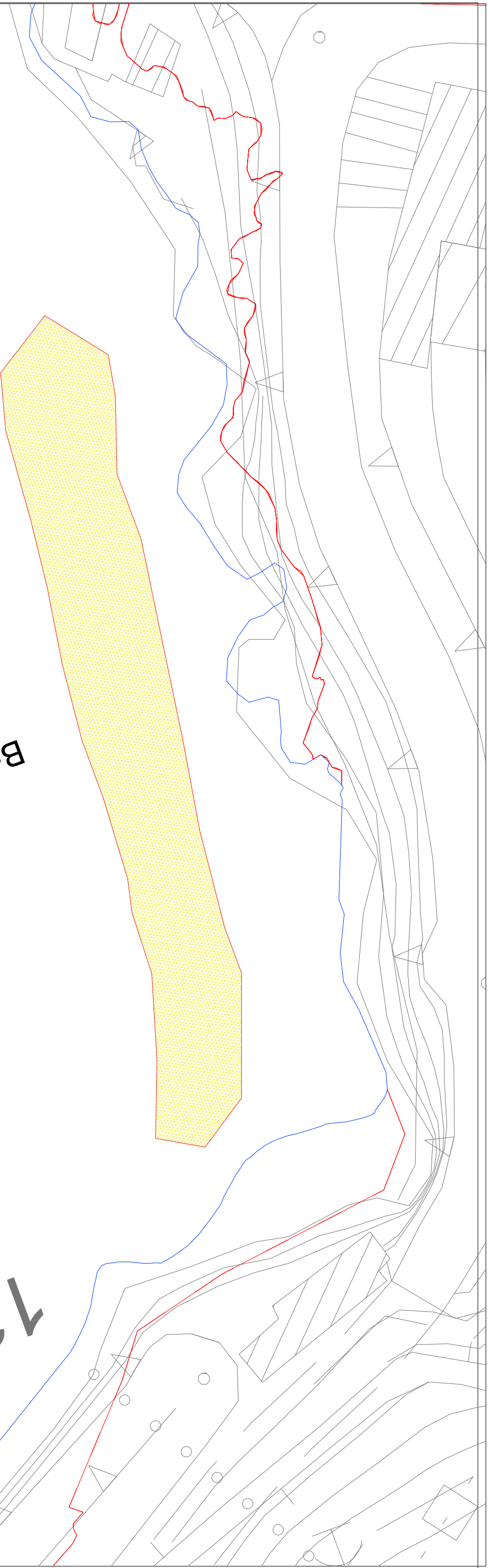
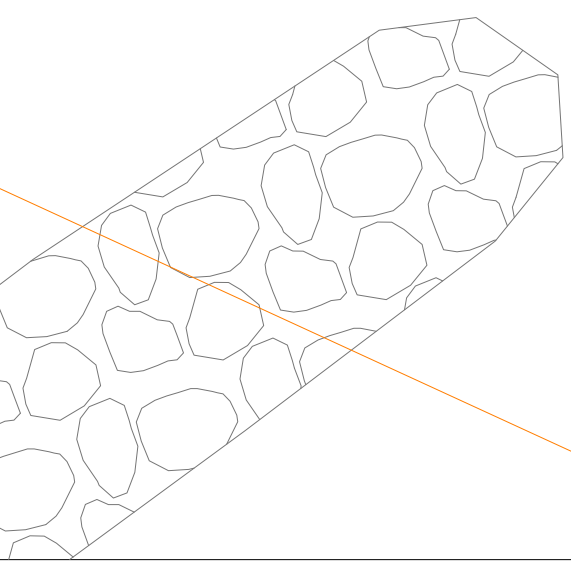
Dasa-Rägister  
UNI EN ISO 9001:2015  
IQ-0221-04

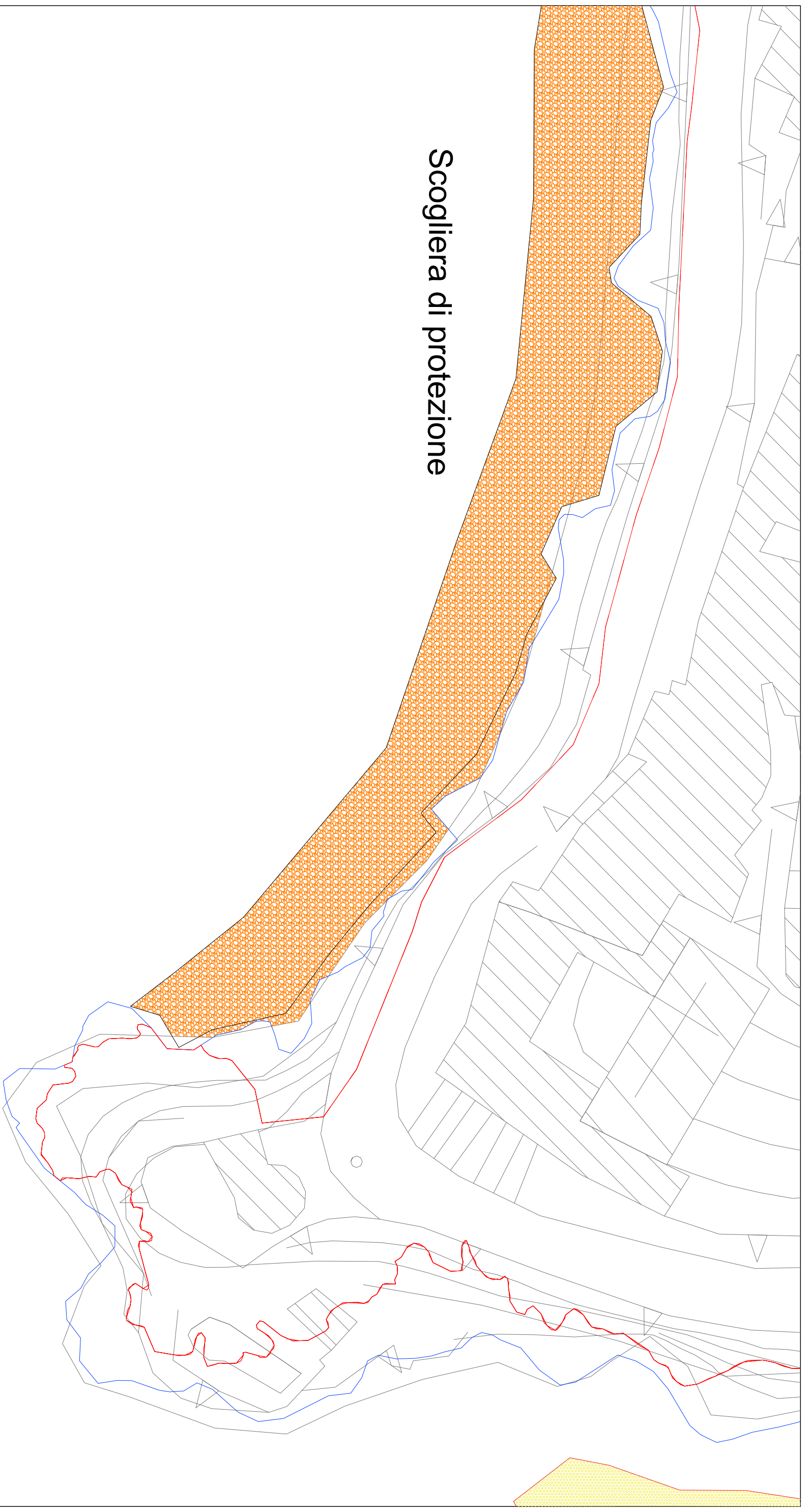
TAV. C1

# Torre di A

Barriera Soffolta antierosione

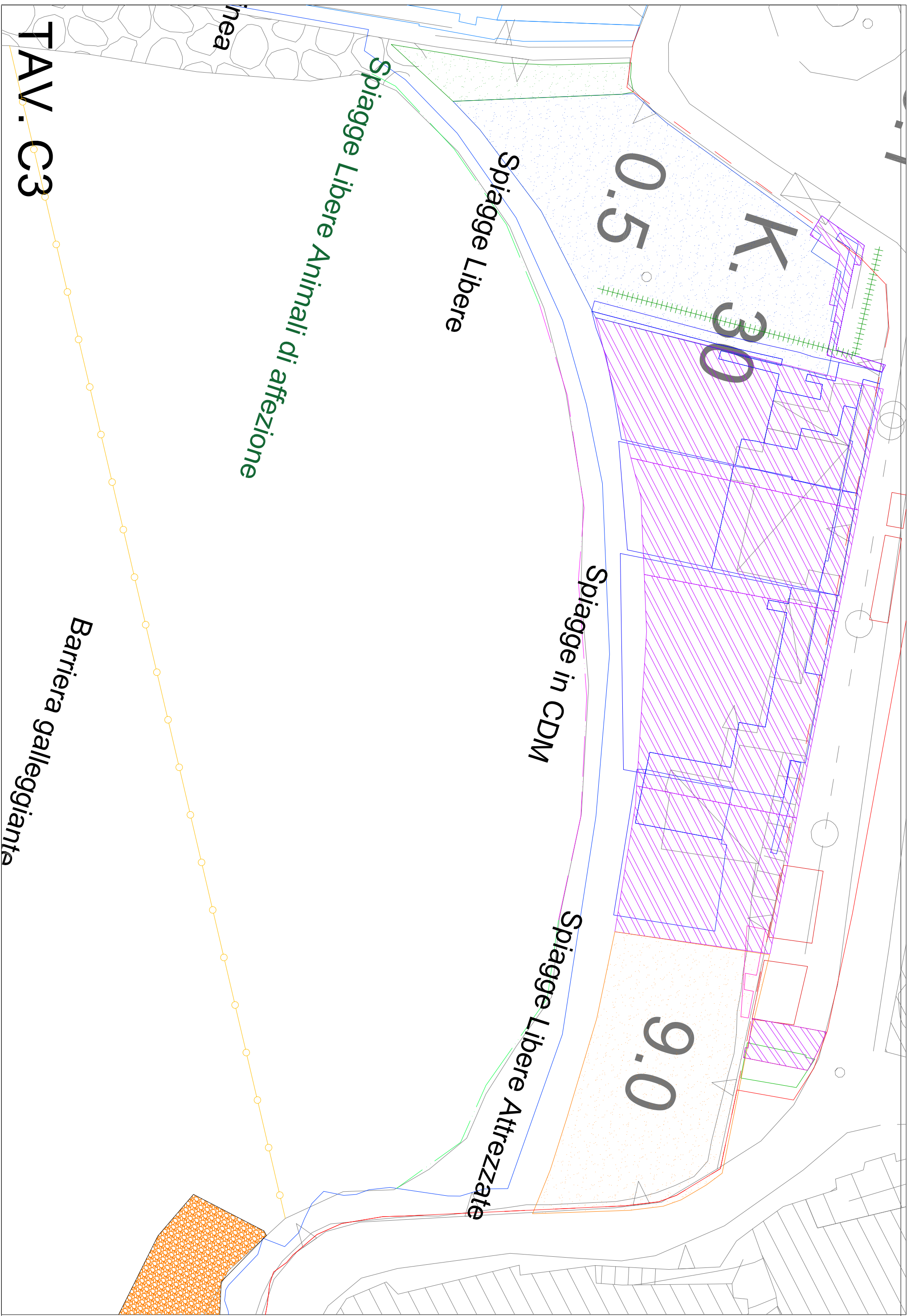
13.8





Scogliera di protezione

TAV. C2



TAV. C3

linea

Spiagge Libere Animali di affezione

Spiagge Libere

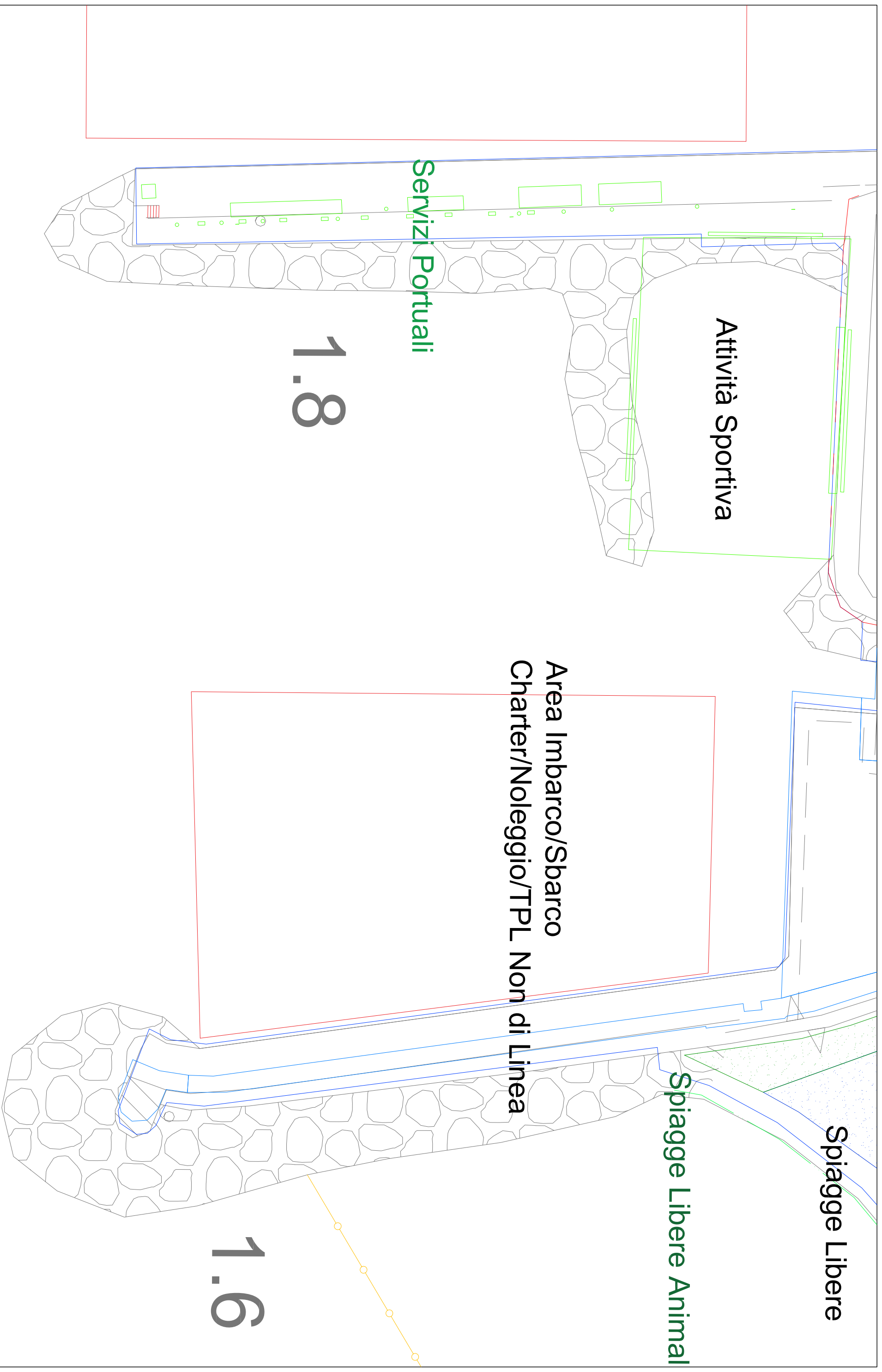
Spiagge in CDM

Spiagge Libere Attrezzate

0.5  
K. 30

9.0

Barriera galleggiante



TAV. C4



TAV. C5

Servizi Portuali

2.5

Attività Sportiva

Area Imbarco/Sbarco

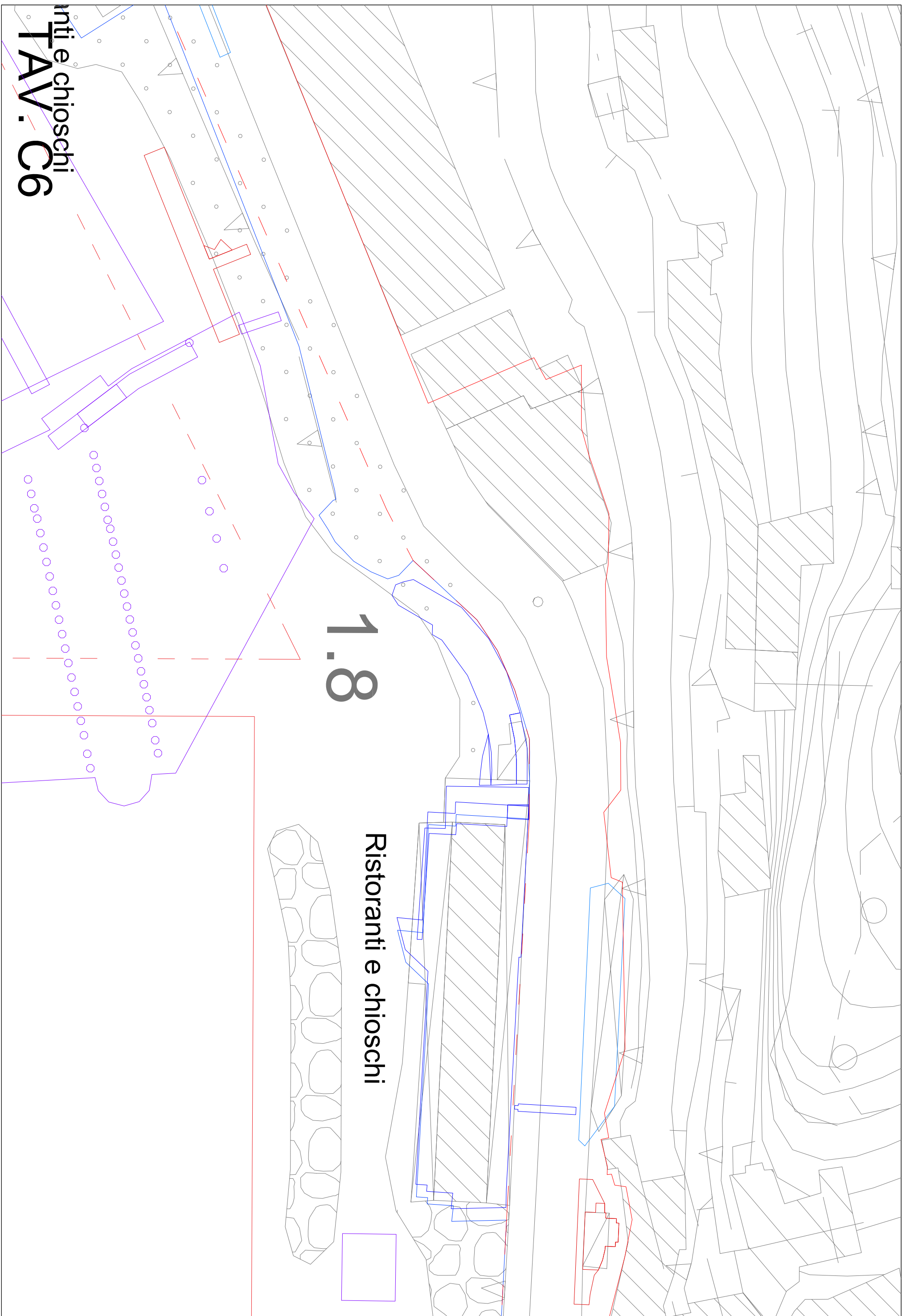
3.1

0.5

K. 30

Spiagge Libere

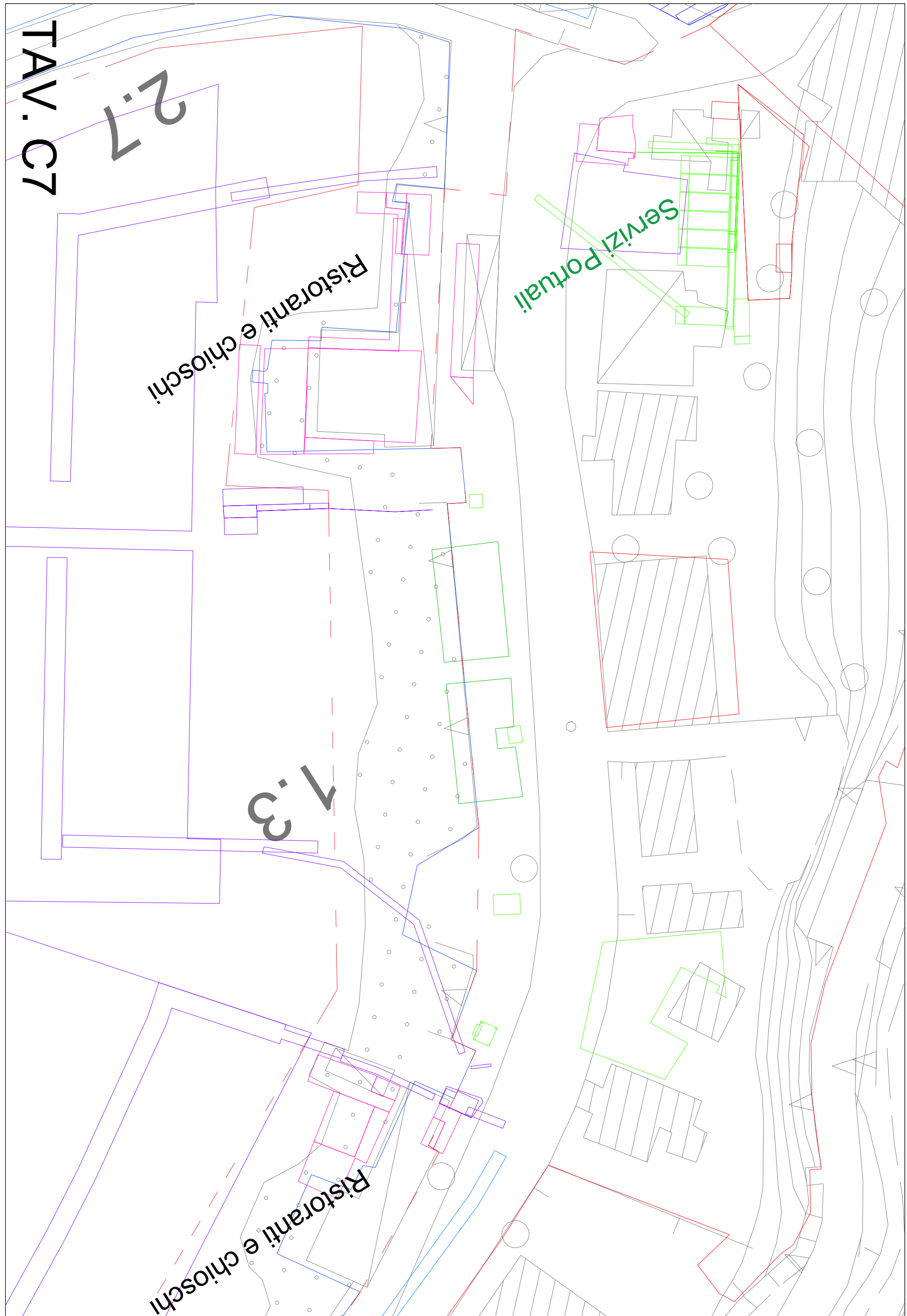
Spiagge Libere Anni



Ristoranti e chioschi

1.8

nti e chioschi  
TAV  
C6



2.7

TAV. C7

1.3

Ristoranti e chioschi

Ristoranti e chioschi

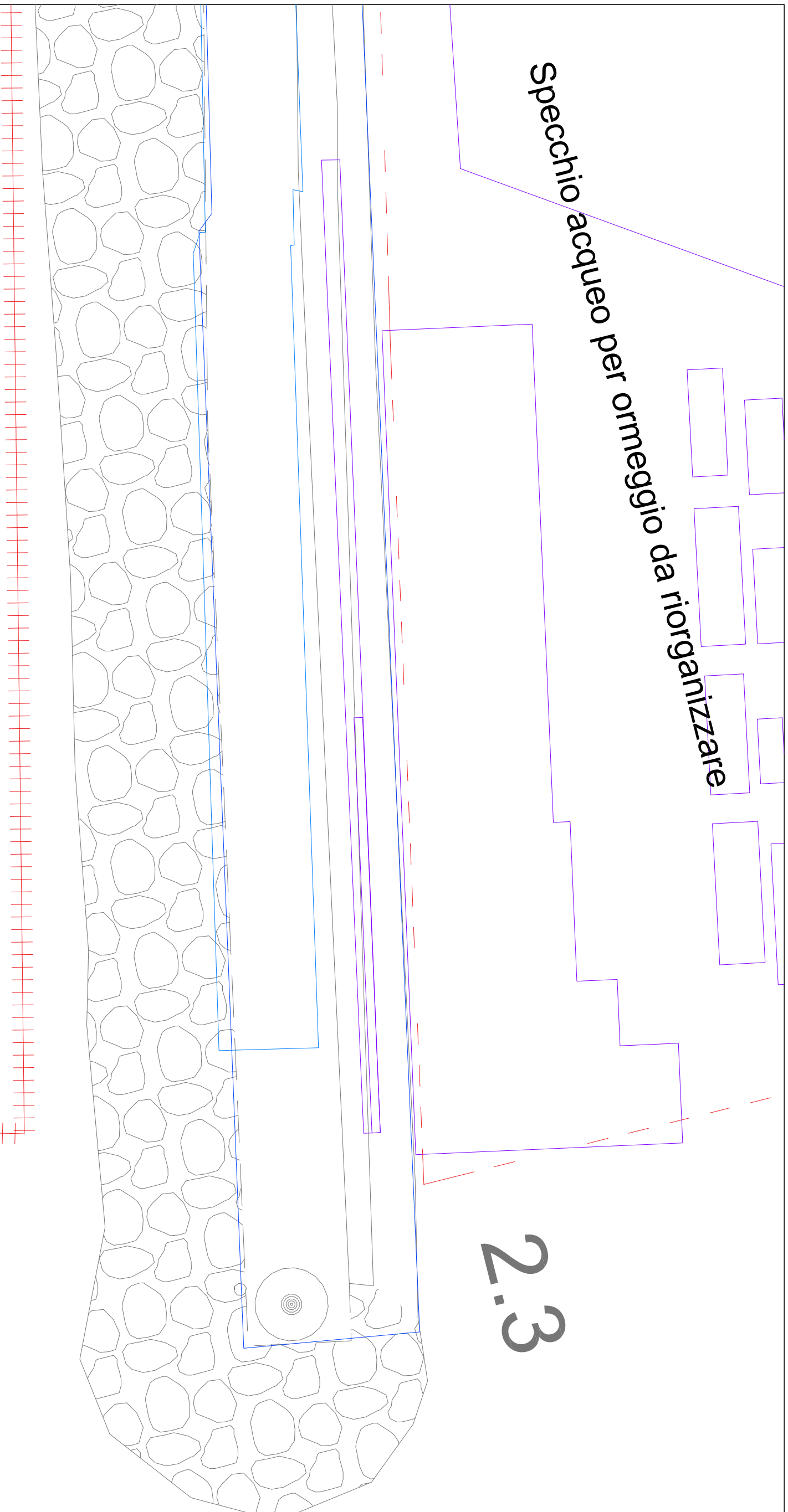
Servizi Portuali

riorganizzare

Specchio acqueo per ormeggio

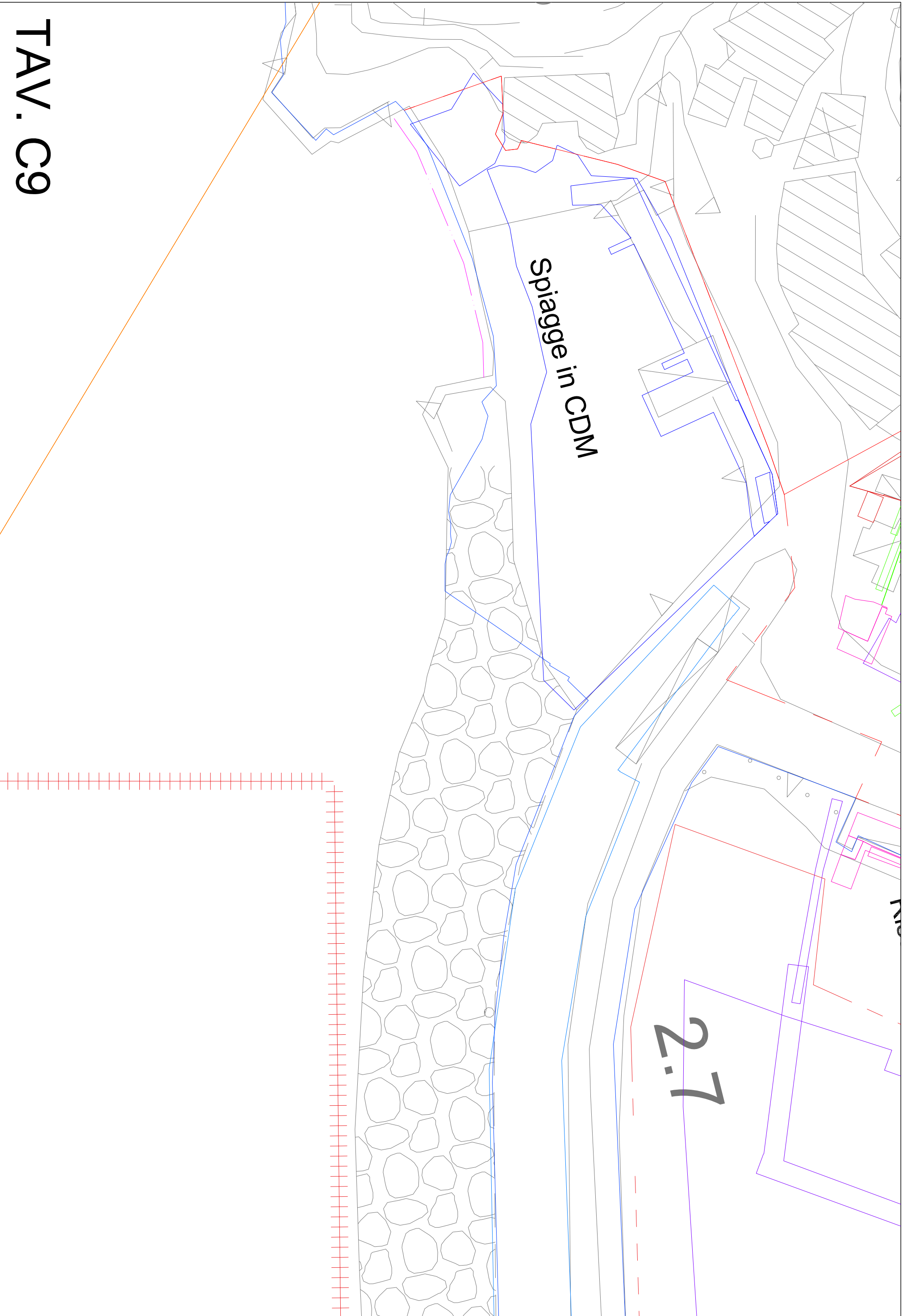
2.3

2.3



Specchio acqueo per ormeggio

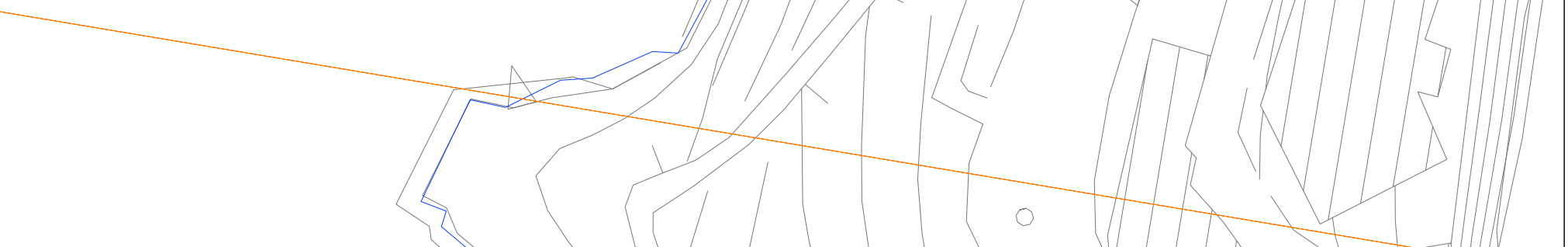
TAV. C8

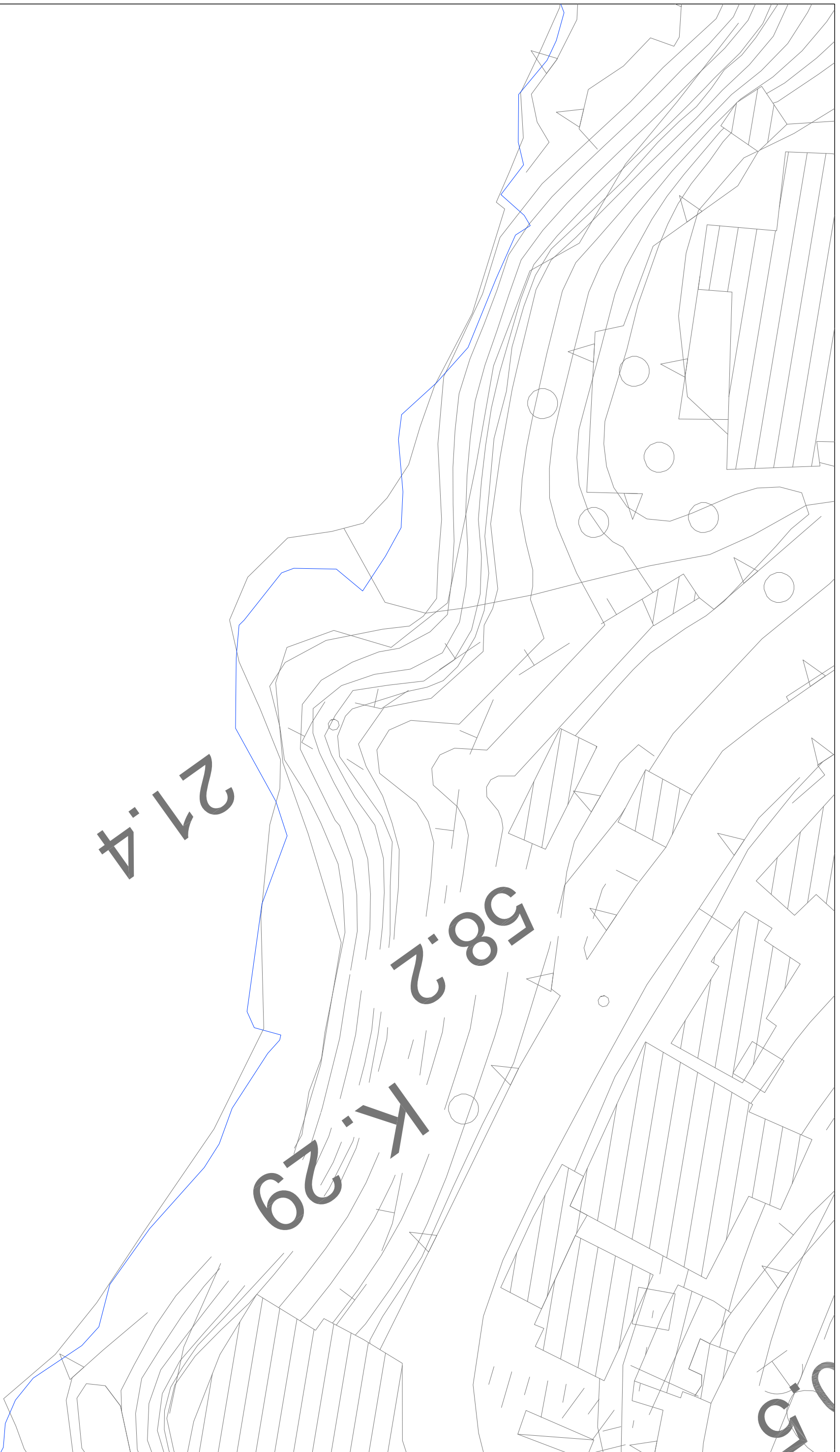


TAV. C9

52.6

TAV. C10





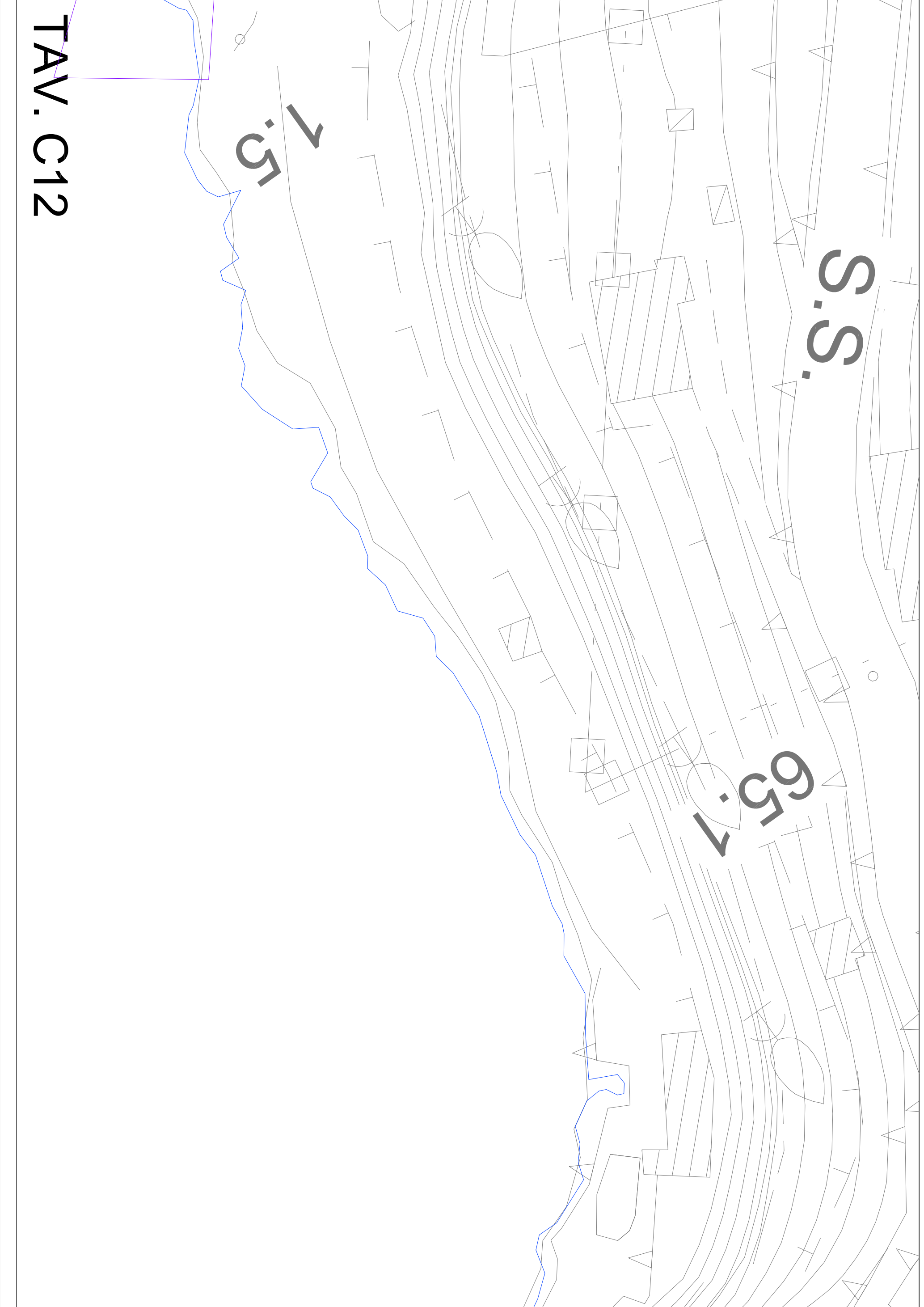
TAV. C11

S.S.

65.7

7.5

TAV. C12



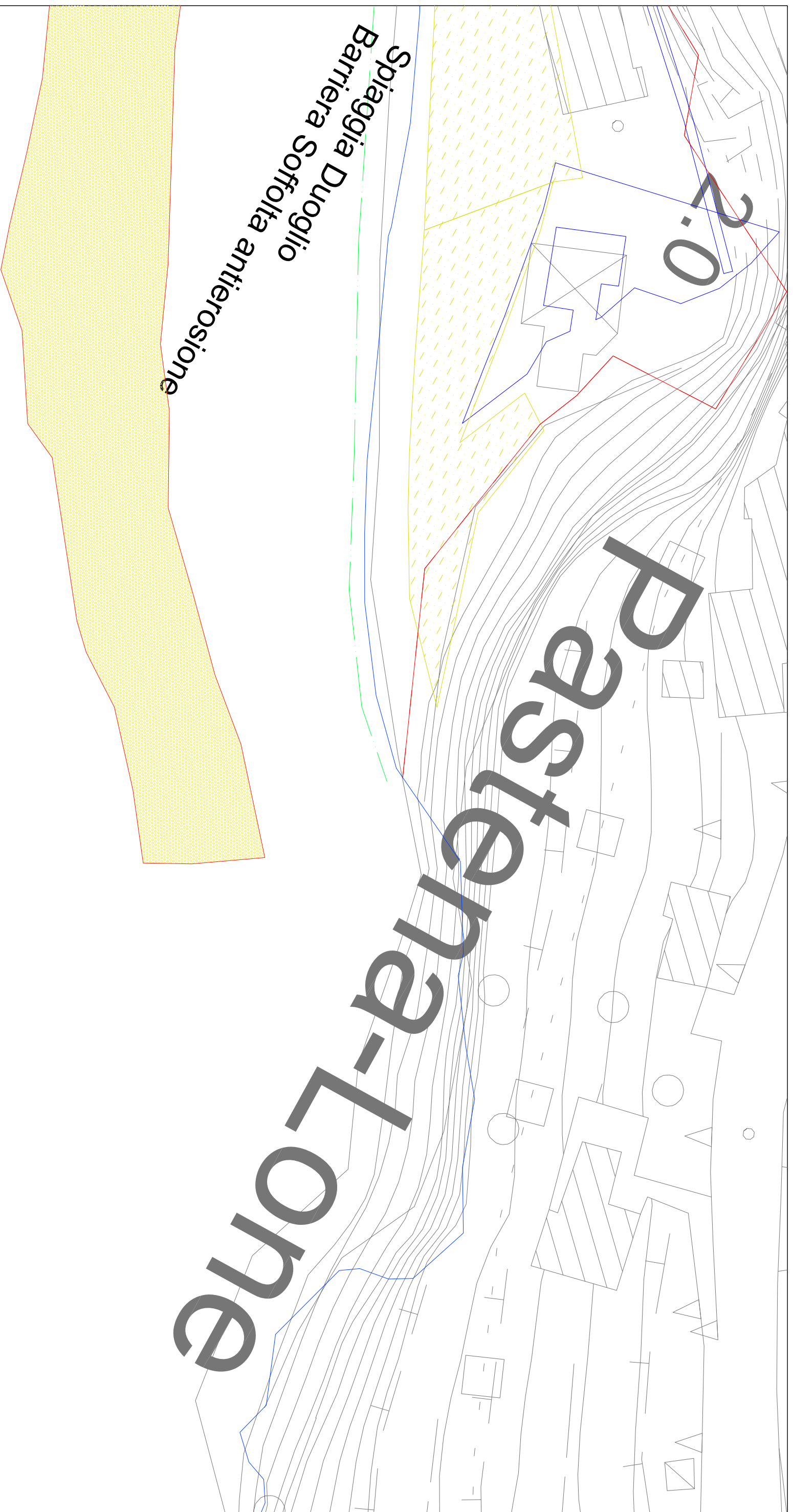


TAV. C13

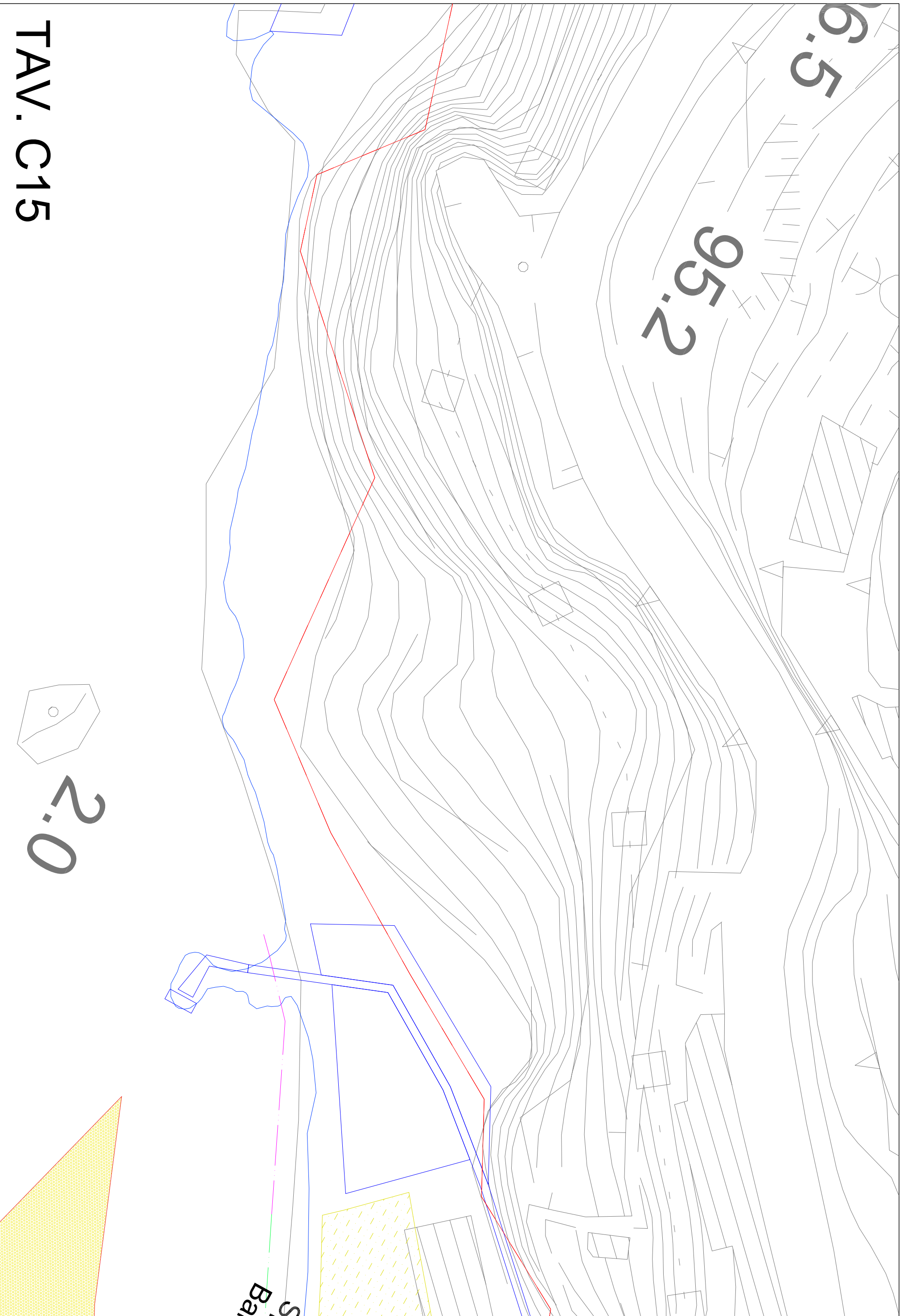
# Pasterena-Lone

2:0

Spiaggia Duoglio  
Barriera Soffolta antierosione



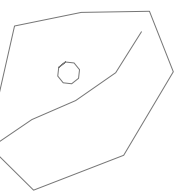
TAV. C14



TAV. C15

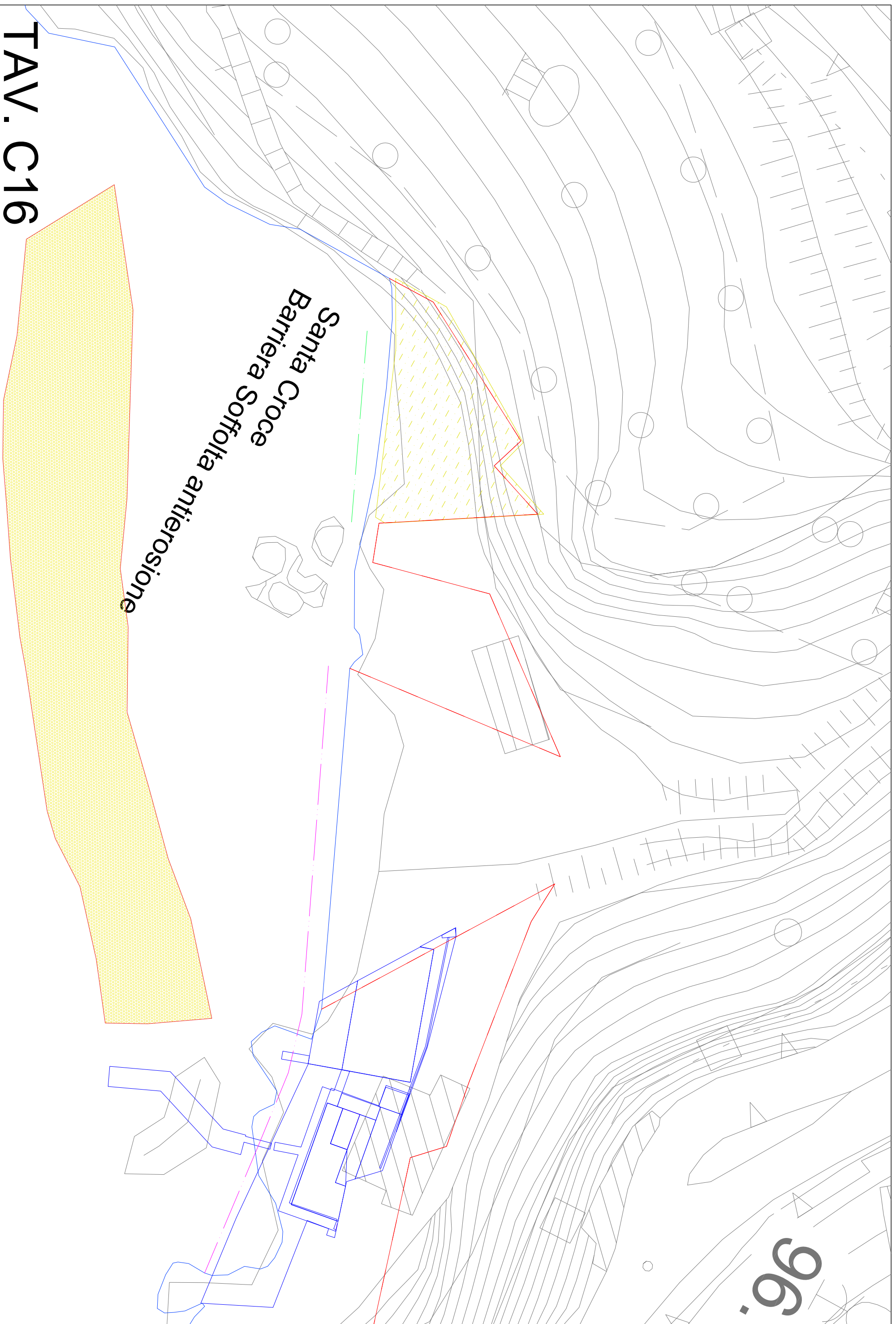
6.5

95.2



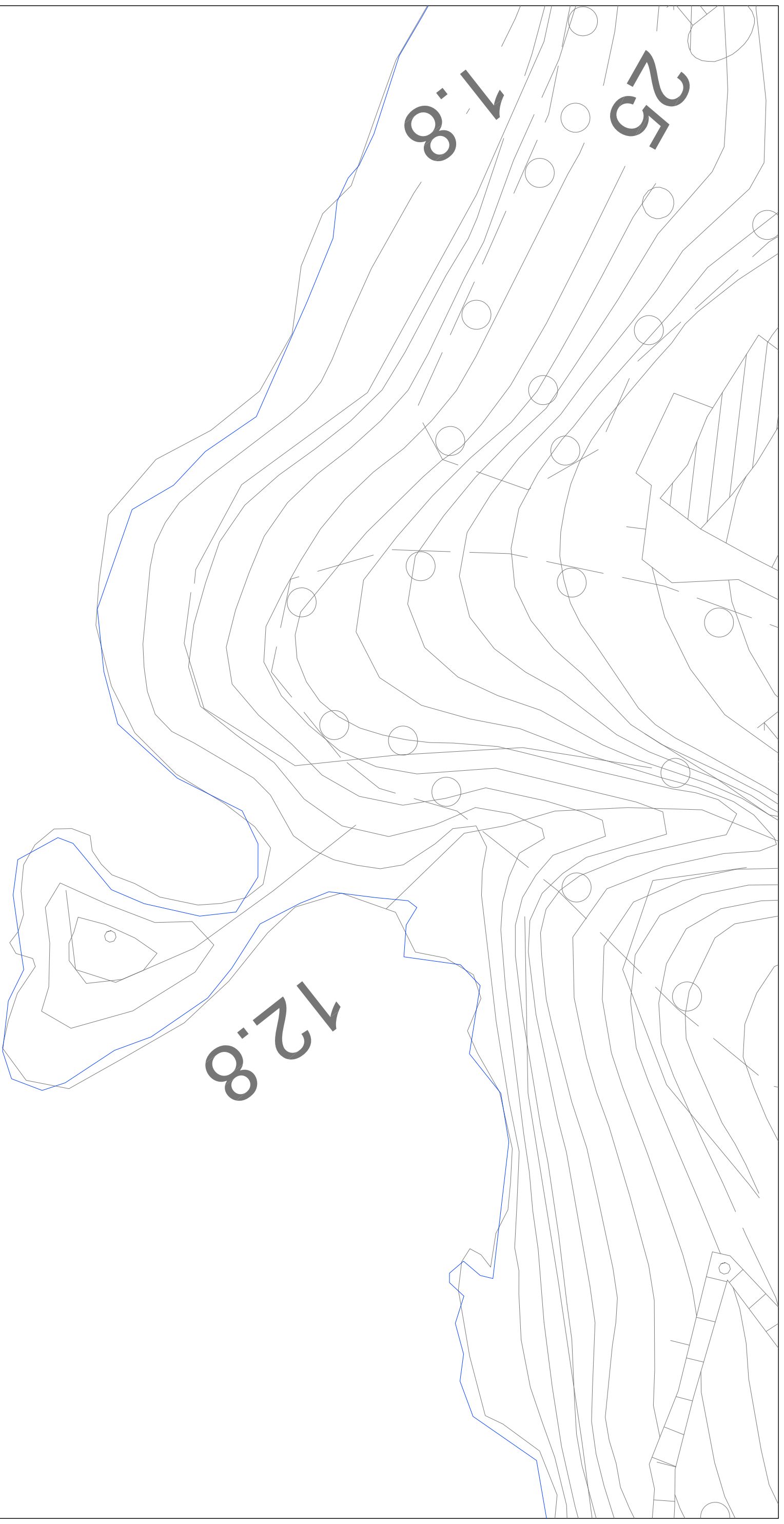
2.0

S. Ba



Santa Croce  
Barriera Soffolta antierosione

TAV. C16

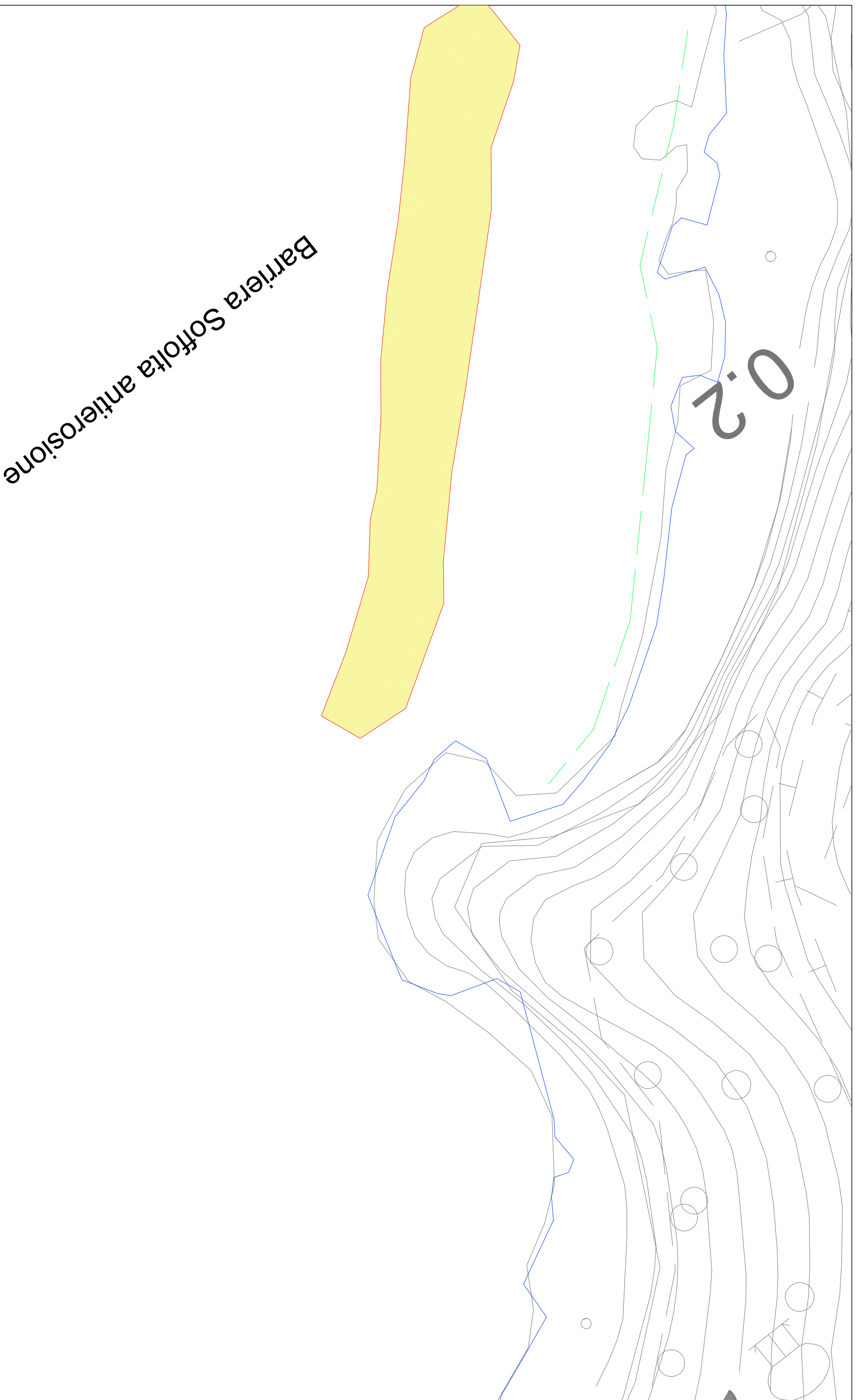


1.8

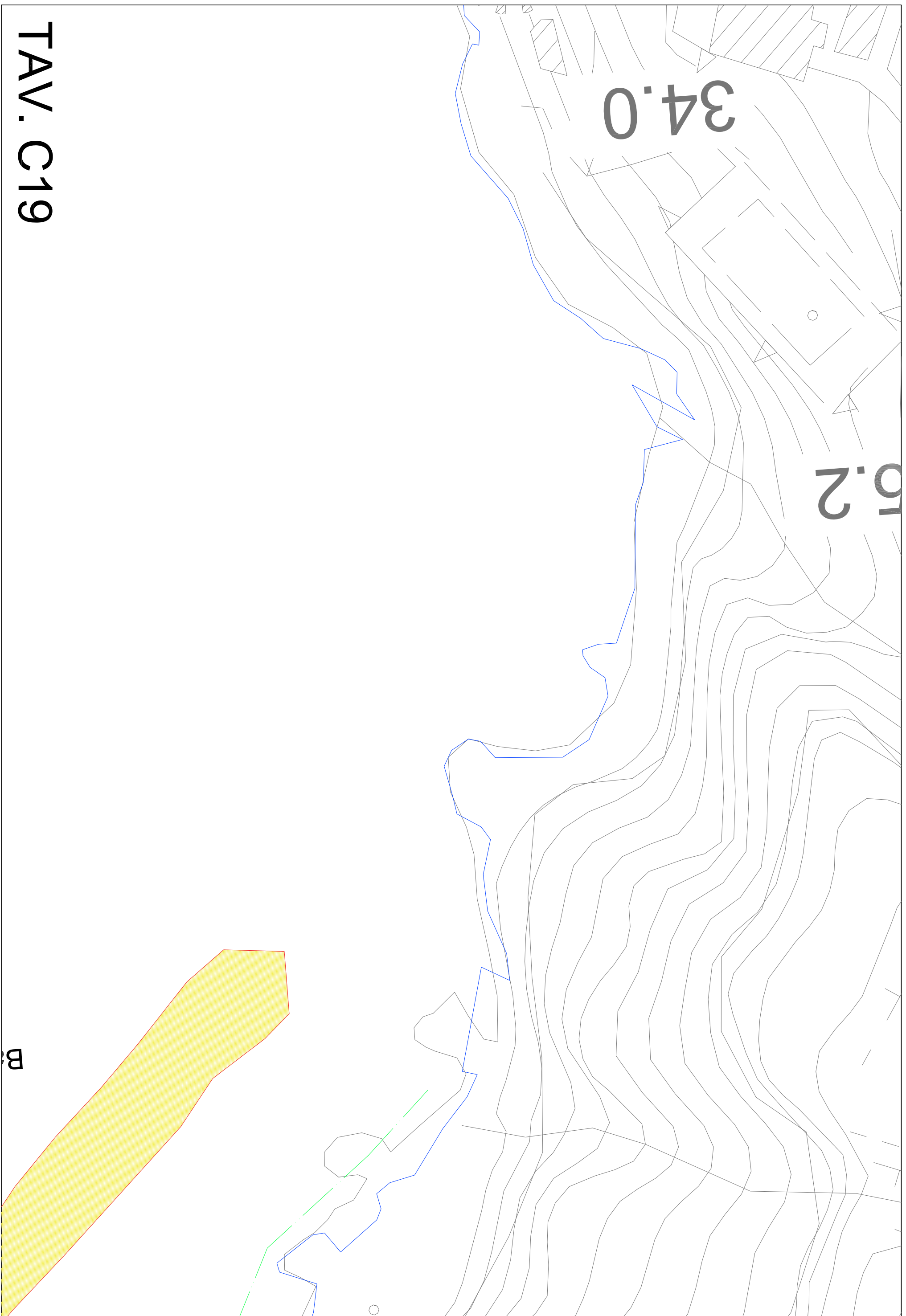
25

12.8

TAV. C17



TAV. C18



34.0

5.2

TAV. C19

5



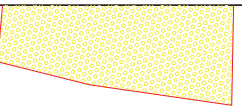
1.7

34.0

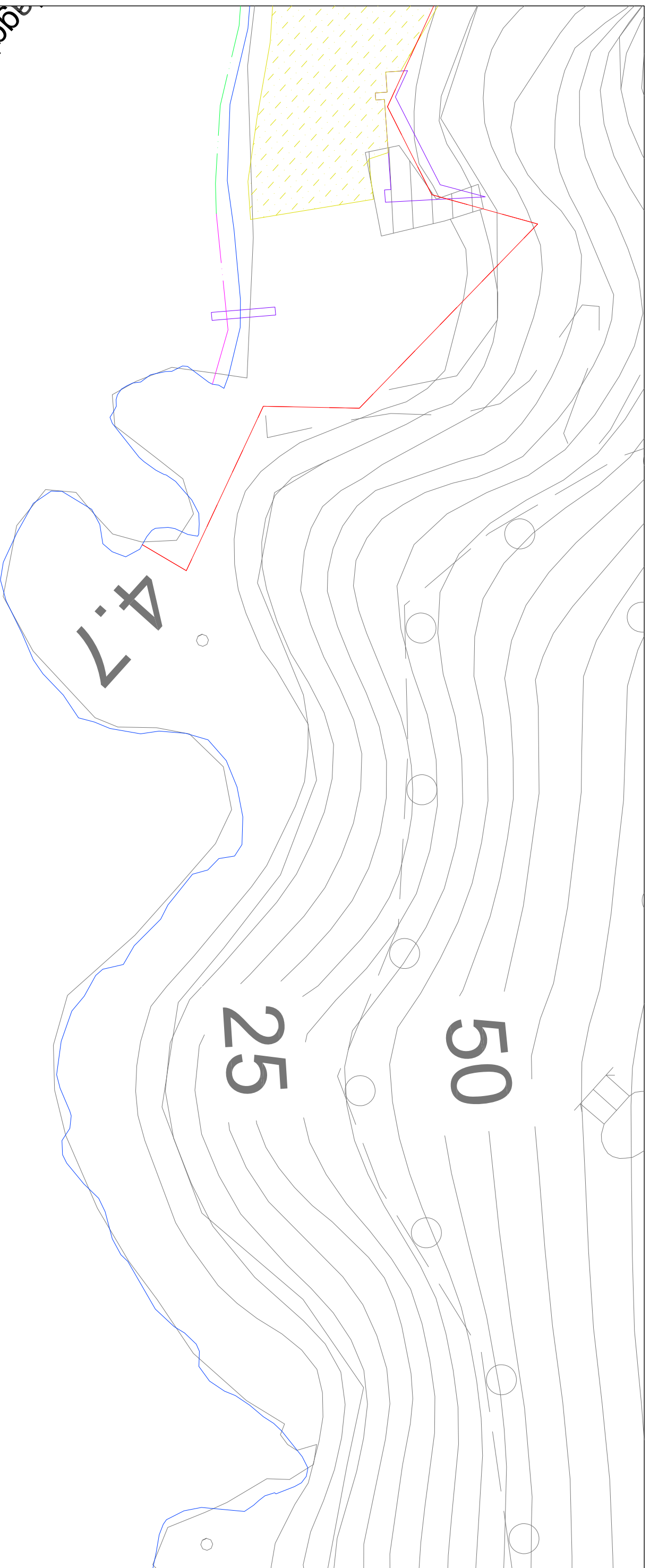
16.3

Torre

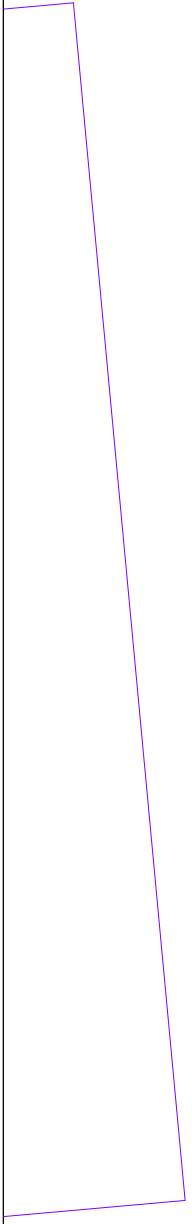
# TAV. C20 di Capo di Vettica



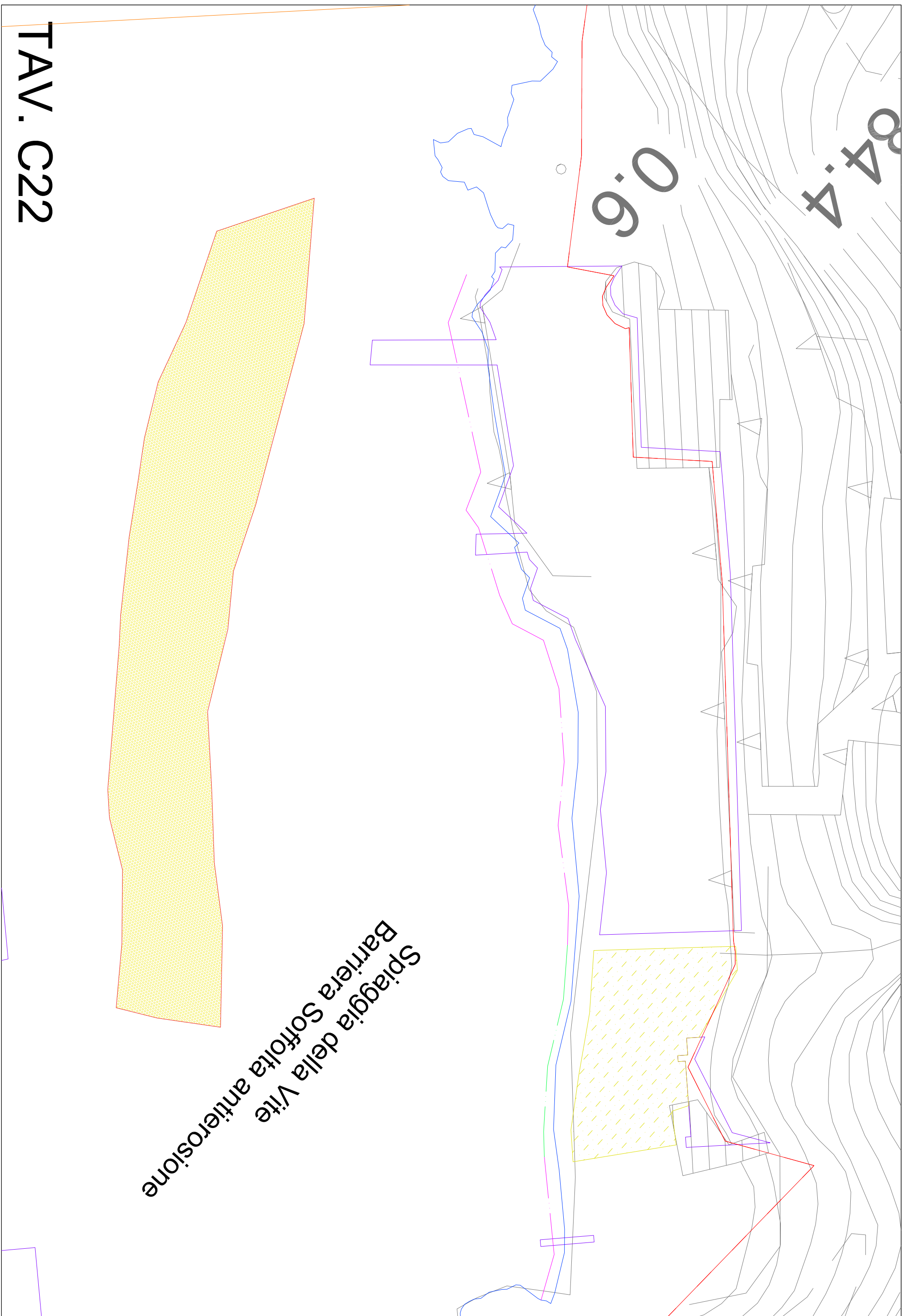
aggia della Vite  
ra Soffolta antierosione



TAV. C21



21



TAV. C22